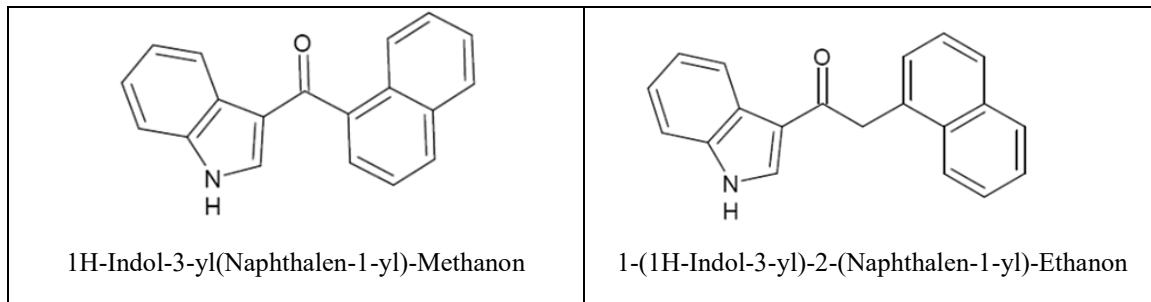


Anlage III

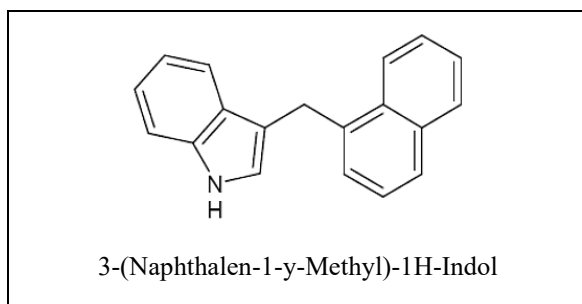
Strukturformeln – Beispiele zu Anlage II

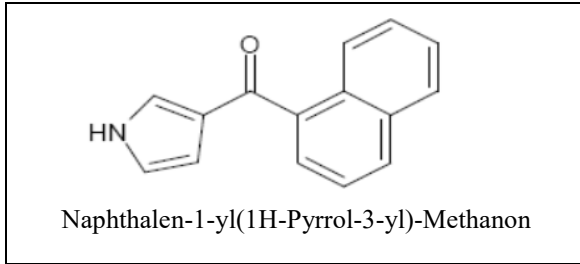
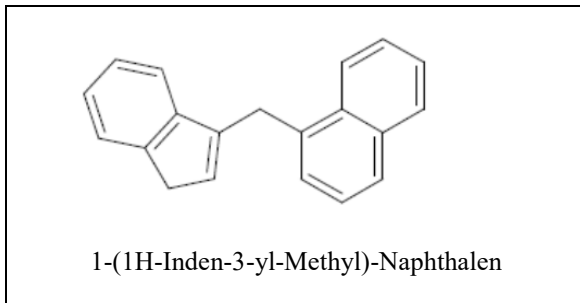
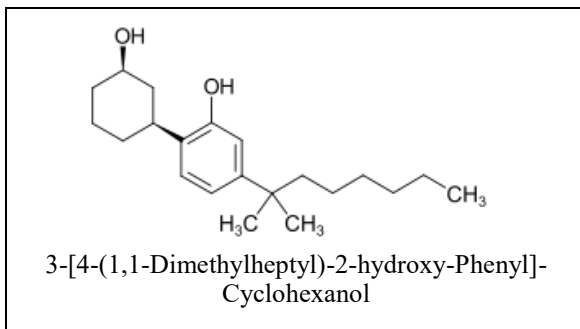
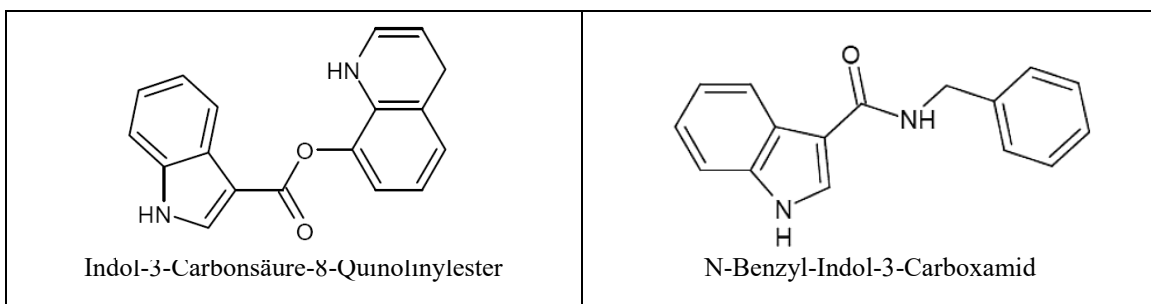
Zu Z 1: Cannabinomimetisch wirksame Verbindungen

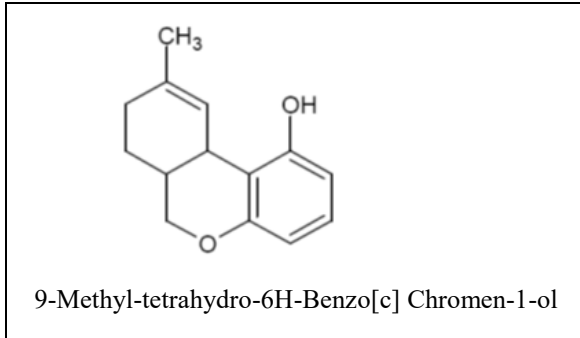
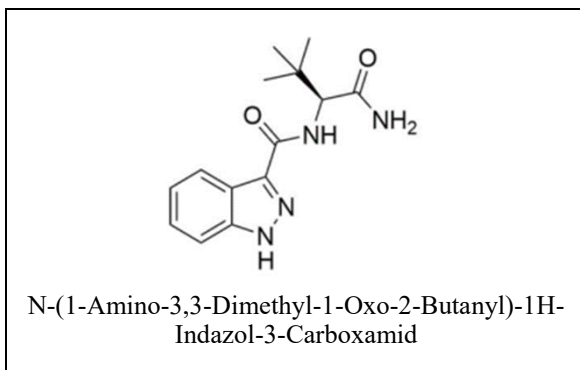
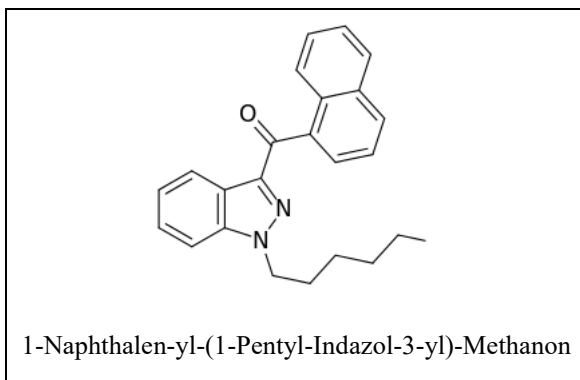
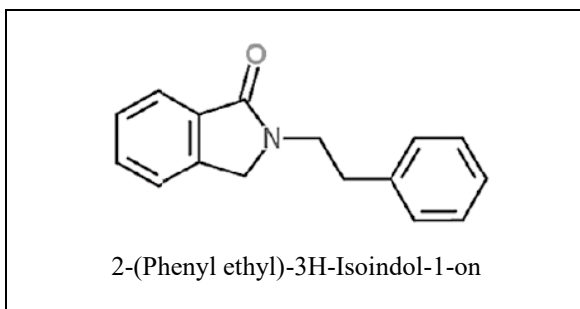
Zu Z 1 lit. a: (1H-Indol-3-yl)Methanon-Verbindungen

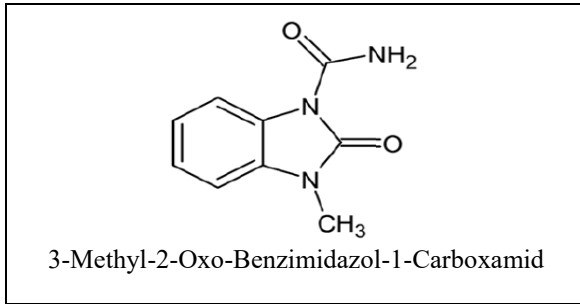
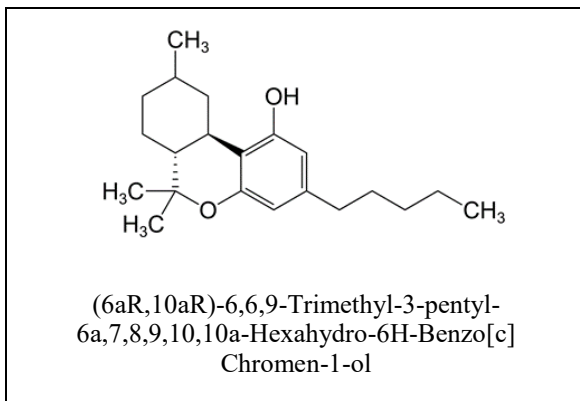


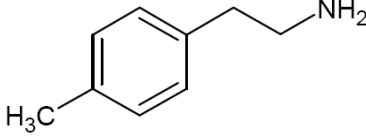
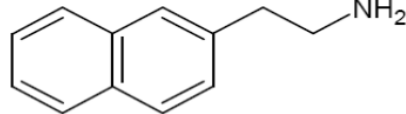
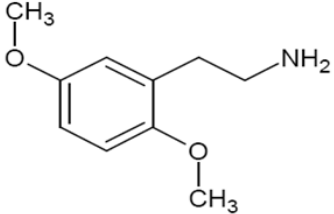
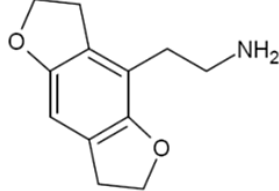
Zu Z 1 lit. b: (1H-Indol-3-yl)Methan-Verbindungen

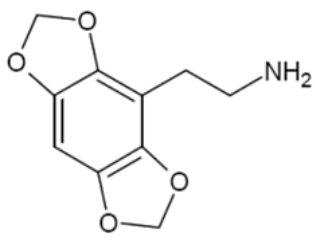


Zu Z 1 lit. c: (1H-Pyrrol-3-yl)Methanon-Verbindungen**Zu Z 1 lit. d: (1H-Inden-3-yl)-Methan- und (3-Inden-1-ylidin)Methyl-Verbindungen****Zu Z 1 lit. e: 2-(3-Hydroxycyclohexyl)Phenol-Verbindungen****Zu Z 1 lit. f: Indol-3-Carbonsäurederivate**

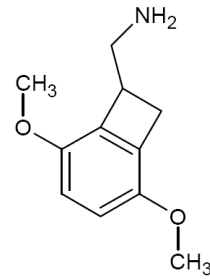
Zu Z 1 lit. g: Tetrahydro-6H-Benzo[c] Chromen-1-ol –Verbindungen**Zu Z 1 lit. h: 1H Indazol-3-Carboxamid-Verbindungen****Zu Z 1 lit. i: (1H-Indazol-3 yl)Methanon-Verbindungen****Zu Z 1 lit. j: Phenyl-Ethyl Isoindol-on –Verbindungen**

Zu Z 1 lit. k: 2-Oxo-Benzimidazol-N-Carboxamid –Verbindungen**Zu Z 1 lit. l: Hexahydro-6H-Benzo[c] Chromen-1-ol –Verbindungen****Zu Z 2: Phenethylamin-Verbindungen**

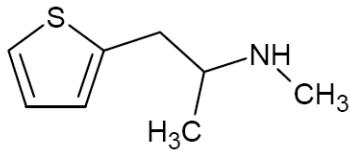
 <p>2-(4-Methylphenyl)ethanamin</p>	 <p>2-(Naphthalen-2-yl)ethanamin</p>
 <p>2-(2,5-Dimethoxyphenyl)ethanamin</p>	 <p>2-(2,3,6,7-tetrahydrofuro [2,3-f][1]Benzofuran-4-yl)ethanamin</p>



2-((1,3)Dioxolo[4,5-f][1,3]Benzodioxol-4yl)-
Ethanamin

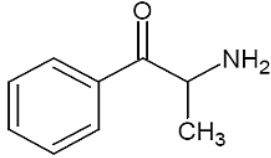
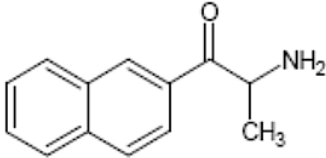
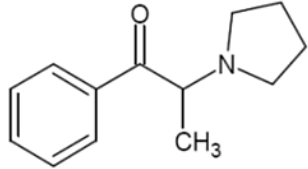
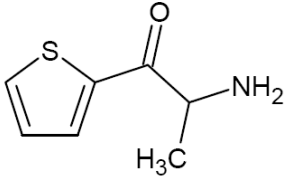


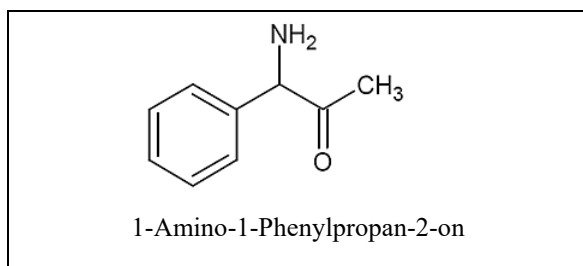
1-(2,5-Dimethoxybicyclo [4.2.0] octa-1,3,5-trien-7-yl)
Methanamin

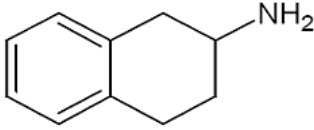
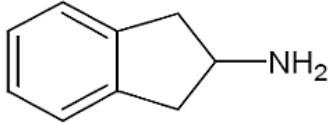


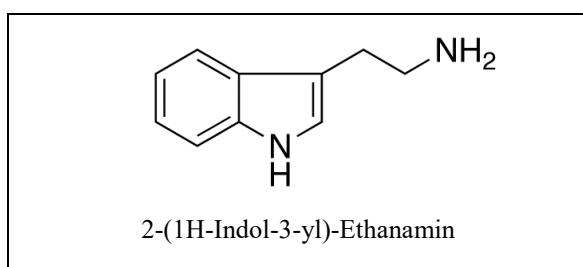
1-(Thiophen-2-yl)-2-Methyl-(N-Methyl)
Ethanamin

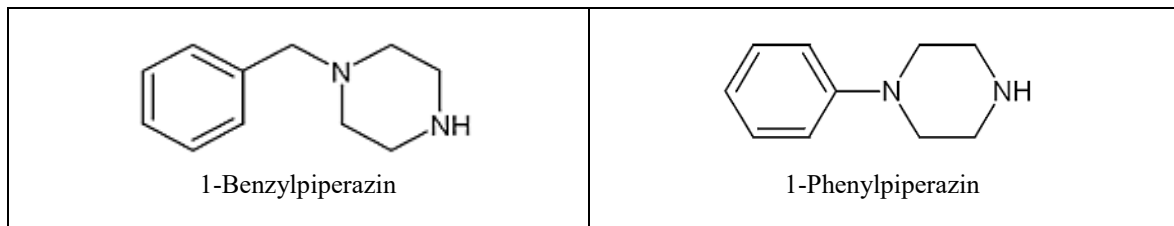
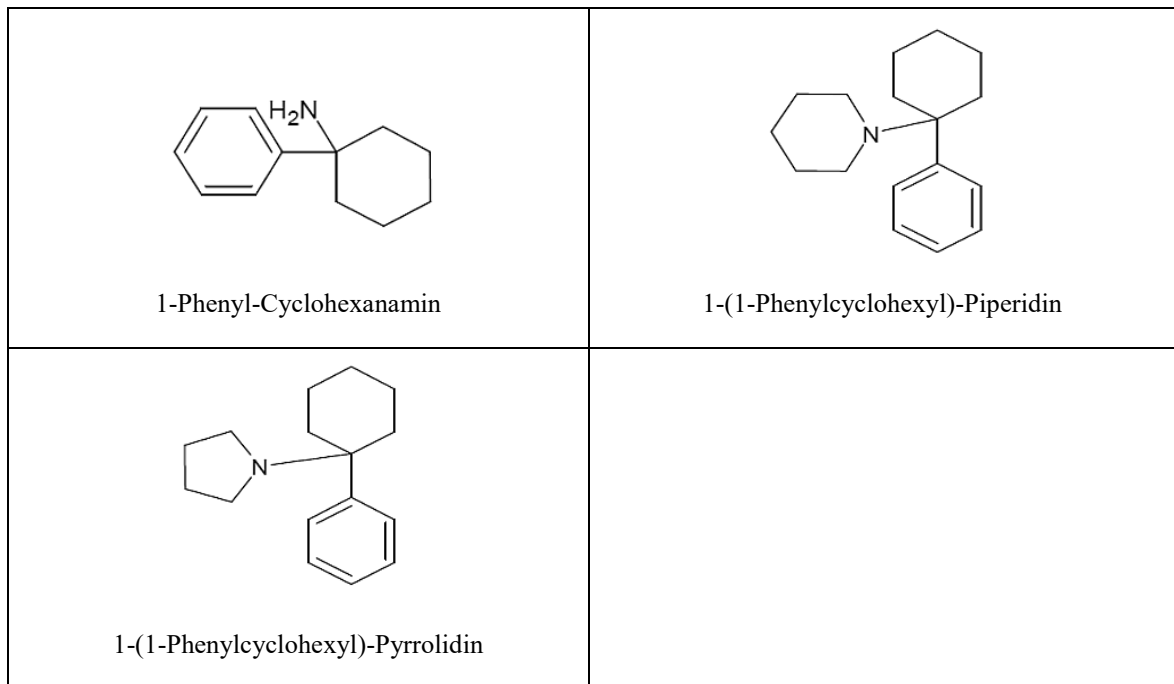
Zu Z 3: Amino-Phenyl-Ethanon-Verbindungen

 <p>2-Amino-1-Phenylpropan-1-on</p>	 <p>2-Amino-1-(Naphthalen-2-yl)-Propan-1-on</p>
 <p>1-Phenyl-2-(Pyrrolidin-1-yl)-Propan-1-on</p>	 <p>1-(Thiophen-2-yl) 2-Methylaminopropan-1-on</p>

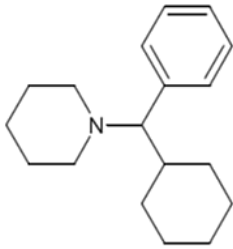
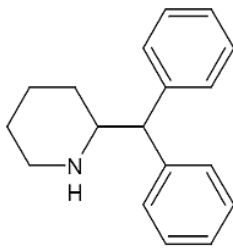
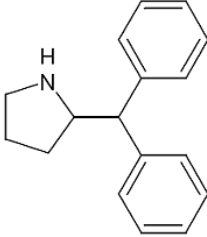
Zu Z 4: Alpha-Keto-Benzylamin-Verbindungen**Zu Z 5: 2-Aminoindan- und 2-Aminotetralin-Verbindungen**

 <p>1,2,3,4-Tetrahydronaphthalin-2-Amin</p>	 <p>2,3-Dihydro-Inden-2-Amin</p>
--	--

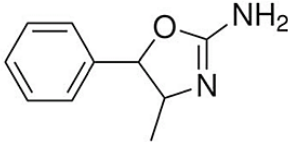
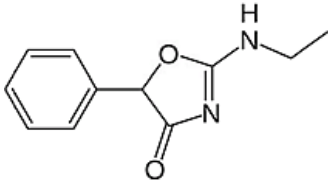
Zu Z 6: Tryptamin-Verbindungen

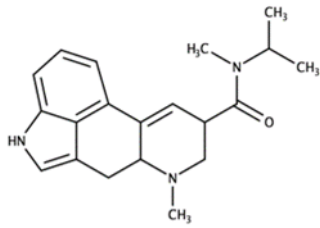
Zu Z 7: (1-Phenyl- und 1-Benzyl) Piperazin-Verbindungen**Zu Z 8: Arylcyclohexyl-Amin, -Pyrrolidin und -Piperidin-Verbindungen**

Zu Z 9: Benzyl-Piperidin- und Benzyl-Pyrrolidin-Verbindungen

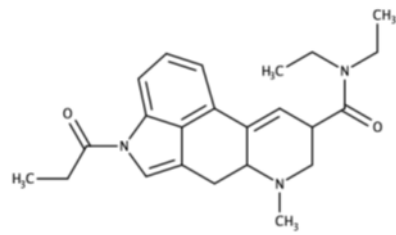
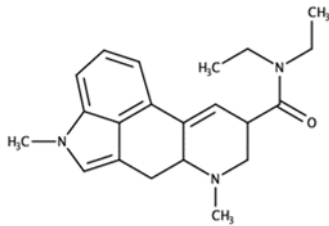
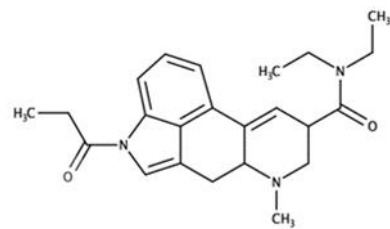
 <p>1-[Cyclohexyl(Phenyl)methyl]-Piperidin</p>	 <p>2-(Diphenylmethyl)-Piperidin</p>
 <p>2-(Diphenylmethyl)-Pyrrolidin</p>	

Zu Z 10: 2-Amino-Phenyl-Oxazol- und 2-Amino-Phenyl-Oxazol-Verbindungen

 <p>4-Methyl-5-Phenyl-2-Amino-Oxazolin</p>	 <p>2-Ethylamino-5-Phenyl-1,3-Oxazol-4-on</p>
---	---

Zu Z 11: 9,10-Didehydro-ergolin-carbonsäureamid-Verbindungen

Methylisopropyllysergamid (MIPLA)

1-Propionyl-Lysergsäurediethylamid
(1P-LSD)N1-Methyllysergsäurediethylamid
(MLD-41)1-Cyclopropionyl-D-Lysergsäurediethylamid
(1CP-LSD)